



# Imagine High

INTEGRATED ARTS & TECHNOLOGY SECONDARY

**Connect ▸ Create ▸ Contribute**



**Chilliwack  
School District**

## ABOUT IMAGINE HIGH



SD33 public school of choice for grades 9-12



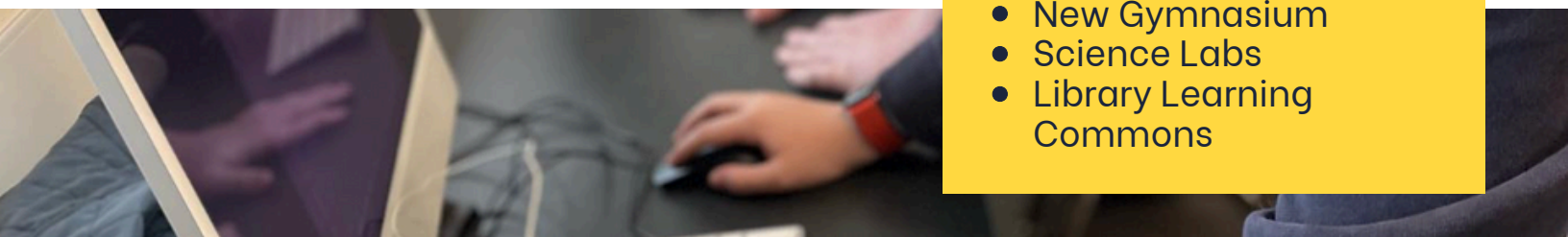
Integrated art & technology through project-based learning



Full service school - graduate with standard BC Dogwood Diploma

Imagine High opened in 2021 on the former site of the University of the Fraser Valley with an outstanding facility that includes:

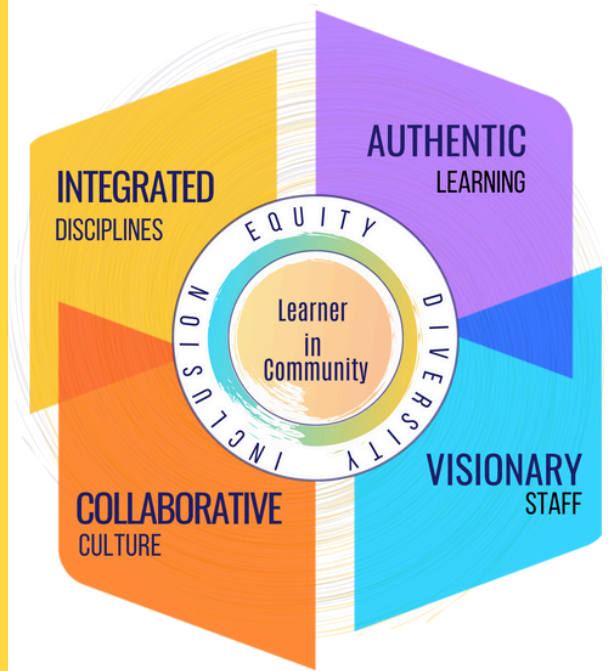
- High-end Theatre
- Shop
- Dance Studio
- Music Studio
- Digital Recording Studio
- Art Studio
- Foods & Textiles
- Culinary Arts
- Makerspace
- New Gymnasium
- Science Labs
- Library Learning Commons



*Imagine High Arts and Technology Secondary School sits on the ancestral and unceded, shared territory of the Ts'elxwéyeqw, Sema:th and Pilalt Tribes, and our learning community is honoured to live, learn, work and play on this beautiful land.*

# LEARNING AT IMAGINE

- Integrated, experiential and community approach to learning (combined course pairings & groupings)
- Learning moves through interdisciplinary projects with content from multiple subject areas
- Rooted in the four pillars of Integrated Disciplines, Authentic Learning, Collaborative Culture & Visionary staff
- For more information about learning at Imagine, visit our website at [imagine.sd33.bc.ca](http://imagine.sd33.bc.ca)



**Connect.  
Create.  
Contribute.**

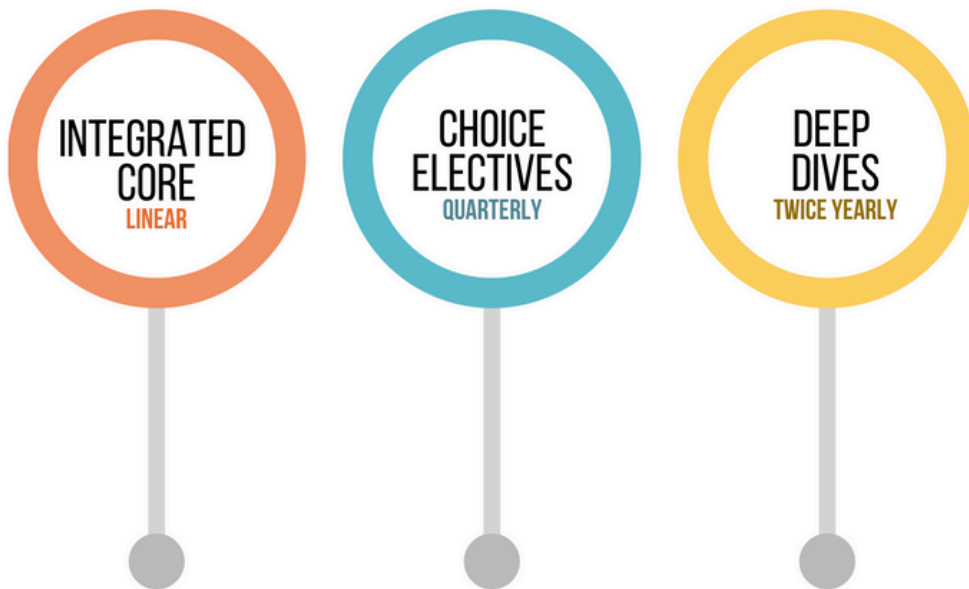
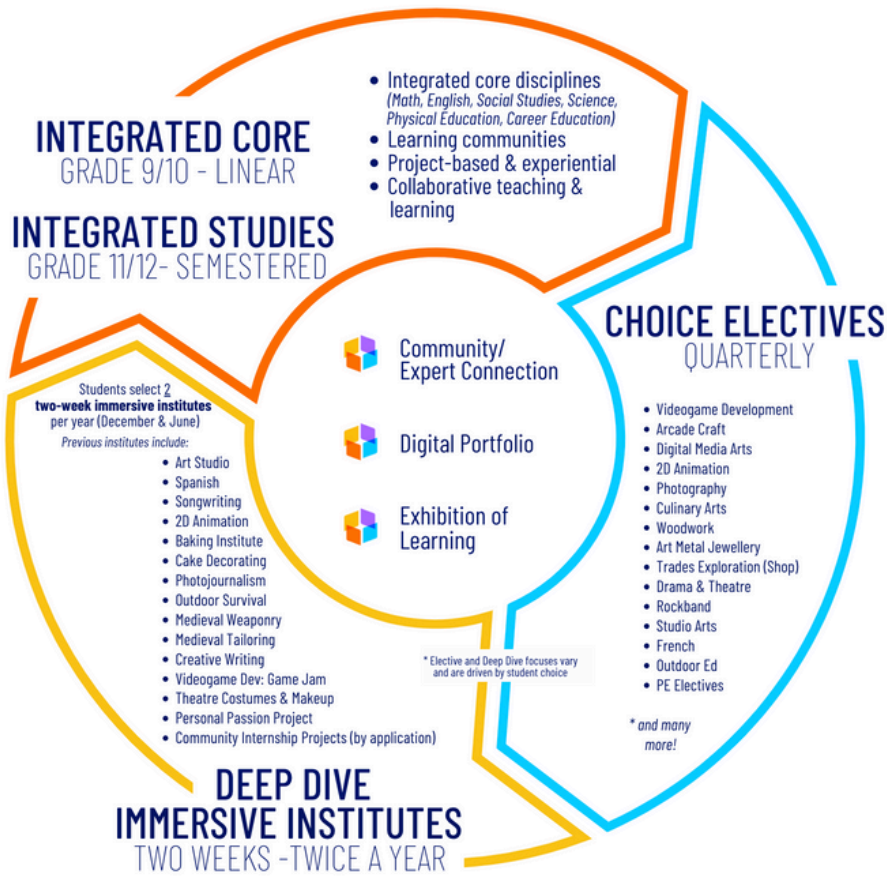


## FOR ME?

- Do you like working in **collaborative classroom settings?** (groups)
- Do you have a **passion for art or technology**, and want to gain **industry-level skills?**
- Do you enjoy **demonstrating learning in creative & unique ways?**
- Do you enjoy **input into your own learning?**



# CURRICULUM PATH



In the integrated core, learning is delivered through experiential interdisciplinary projects. Students build an understanding of learning strengths, explore thinking to build independence, and create powerful demonstrations of learning. A key focus is building community through shared real-world work. Projects are supported by learning partners and community.

Electives at Imagine connect with and explore areas of interests and passion. Students select quarterly elective sessions in a variety of art and technology areas in order to build skills needed to showcase learning within the integrated core. Students deepen discipline specific skills by focusing on creative and artistic processes.

Deep Dives are immersive institutes that offer opportunities for students to go deep into interests within passion areas. During the institutes, students collaborate with peers, teachers, experts, and community. These intensive learning opportunities support students to hone in on personal passion areas, explore careers, and learn with industry standard tools.



## BELL SCHEDULE 2025-2026

EVENT	TIME	TOTAL MIN
School Begins	8:30 am	
Integrated CORE/Electives	8:30 - 9:51	81
Break	9:51 - 9:59	8
Integrated CORE/Electives	9:59 - 11:20	81
Lunch	11:20 - 12:00	40
Integrated PAIRINGS/Electives	12:00 - 1:21	81
Break	1:21 - 1:28	7
Integrated PAIRINGS/Electives	1:28 - 2:48	80
School Ends	2:48 pm	

# DEEP DIVES IMMERSIVE INSTITUTES(2X/YEARLY)

- All regular learning paused during Deep Dives
- Opportunities for students to go deep into interests & personal passion areas
- Prepare for internships/work experience & learn with industry standard tools

## Examples:

- *Outdoor Wildernes Survival*
- *Baking Institute/Cake Decorating*
- *Songwriting*
- *Videogame Development*
- *Theatre Make-Up*
- *Medieval Weaponry*
- *Animation*
- *And more!*



## INCLUSIVE LEARNING

We value equity, inclusion and diversity. Our school community welcomes all types of learners.

### Our approach

- **Pull in supports within the regular classroom**
- **All students in community**
- **Student-centered planning**
- **Multiple ways to demonstrate and universal supports for independence**
- **Personalization and competency -based Individual Education Plans**

Mainstream alternate programming is available at the larger secondary schools in School District 33.



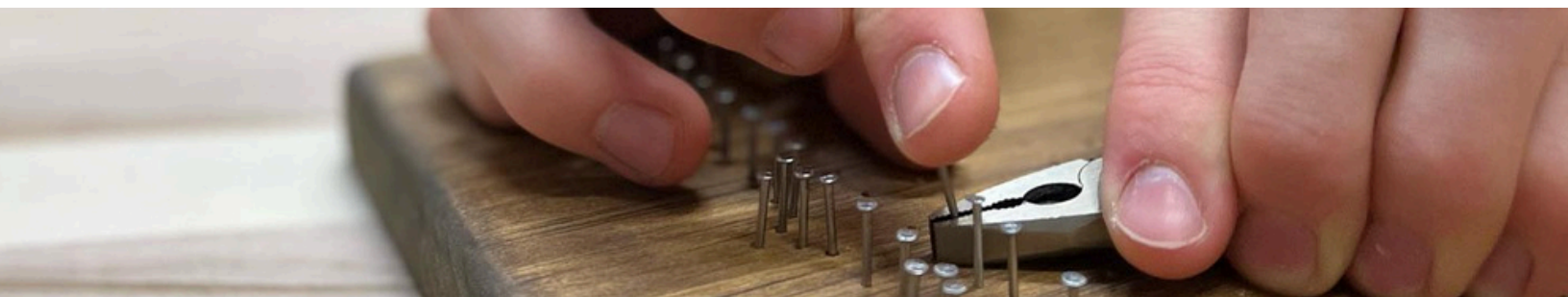
# ATHLETICS

- Brand new gymnasium
- Work-out room
- Dance studio
- Sports Teams
  - **Basketball**
  - **Volleyball**
  - **Ultimate Frisbee**
  - **Swimming**
  - **Cross Country**
  - **Curling**
  - and more to come!



# STUDENT CLUBS

D & D  
Service Club  
Chemistry Club  
Minecraft  
Drama  
Hiking Club  
Podcasting  
Leadership  
Student Engagement Team  
Robotics  
*Have an idea? Start one up with a staff sponsor!*



# OUR GRADUATES

In 2024, Imagine High celebrated our inaugural graduation class.

We are incredibly proud of what they have accomplished, and cannot wait to see what they create in our world.

Our learners set out on their next adventure to university, college, trades programs, and the work world. Students from Imagine have been accepted into a variety of programs including Early Childhood Education, Concept Art, Sciences, Engineering, Teaching and more .



Please check out this series highlighting some of our amazing graduates in this [Grad Shorts](#) playlist.





# TRANSPORTATION



- Imagine High is conveniently located in Midtown, directly on the #1 public bus line in Chilliwack.
- As a school of choice, regular transportation is not provided. Students attending a school other than their catchment school, may be eligible for courtesy ridership busing (Policy 710.1 Administrative Regulation) based upon availability of seating on an existing bus route.
- Busses will not be re-routed, and no additional stops will be added. Authorization for courtesy riders will only be considered once regular riders have been accommodated. Fees apply to Courtesy riders.
- Transportation cannot confirm ridership for Courtesy Rider until Aug. when all Catchment School Registrations are complete. To learn more about the eligibility of your student visit [Transportation](#).

# REGISTRATION PROCESS

- Register at <https://sd33.bc.ca/registration> (select attend outside of catchment).
- Seats are based on availability - the Welcome Center team will reach out via email and confirm whether space is available. If space is not available, students will be placed on a waitlist
- Families & student sign up for a zoom with school team to connect around learning at Imagine & student goals to hear if this approach to learning might be a good fit for your child. Registration is confirmed after zoom

**REGISTRATION FOR 2024-2025 and 2025-2026 SCHOOL YEAR IS OPEN NOW**



# CONNECT WITH IMAGINE

There are many ways to be in touch with Imagine High:

**Email** - [iss-alloffice@sd33.bc.ca](mailto:iss-alloffice@sd33.bc.ca)

**Website** - [imagine.sd33.bc.ca](http://imagine.sd33.bc.ca)

**Social Media** - [Twitter\(X\)](#), [Instagram](#), [Facebook](#), [Youtube](#) at [@imaginesd33](#)

**Phone** - 604.792.0941



## LINKS & MORE INFORMATION

Read and watch more about Imagine High:

- [What learning at Imagine looks like: \*\*About Imagine Video\*\*](#)
- [Imagine High Learning Framework](#)
- [Imagining Imagine High - White Paper](#)
- [Dreaming Big - InspireEd Article](#)
- [Learning at Imagine on Youtube](#)
- [Community at Imagine on Youtube](#)
- [CDI Spaces Feature - Imagine High](#)
- [Aboriginal Peoples Television Network \(APTN\) Imagine High feature](#)
- [The Tyee Article - Voice of the Stream Project](#)
- [Chilliwack Progress article - Opening Day](#)
- [Chilliwack Progress article - Voice of the Stream Project](#)
- [Chilliwack Progress Article - Deep Dives at Imagine](#)
- [Chilliwack Progress Article - Salish Weaver at Imagine Artist Residency](#)
- [Imagine High: Proof That Public Education Can Do This - Classmate.team](#)
- [Imagine High: A Bold New Vision for Learning- People for Education Canada](#)

